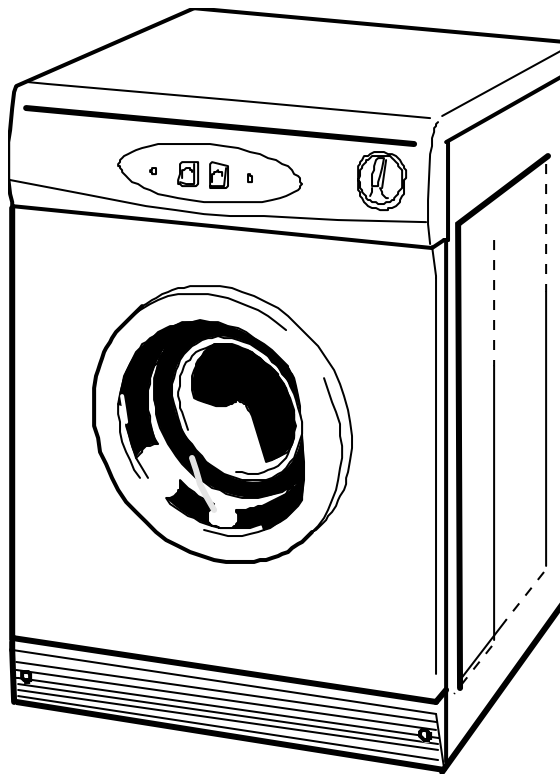


# INSTRUCTIONS FOR USE



**White Knight**  
**eco 83A**

*The **LOW CARBON** Dryer*



**GB**

## **IMPORTANT**

PLEASE READ THESE INSTRUCTIONS THOROUGHLY BEFORE USING THIS APPLIANCE.  
KEEP THEM IN A SAFE PLACE FOR FUTURE REFERENCE.

## **SECTION 1: BEFORE USE**

- \* Safety warnings
- \* User Information

## **SECTION 2: INSTALLATION**

- \* Venting
- \* Prior to Installation
- \* Positioning and Air Supply
- \* Final Installation

## **SECTION 3: TECHNICAL SPECIFICATIONS**

## **SECTION 4: CONTROL PANEL**

- \* The Timer
- \* Heat Switch
- \* Heater Neon
- \* Anticrease Neon
- \* Start Button

## **SECTION 5: DRYING YOUR LAUNDRY**

- \* Before Drying
- \* Drying
- \* After removing the dried clothes

## **SECTION 6: ADDITIONAL INFORMATION**

- \* Any Problems?
- \* Optional Extras

## **SECTION 7: DOOR REVERSAL**

### **SECTION 1: BEFORE USE**

#### **\* Safety warnings**

These notes are provided in the interest of safety. You must read them before installing or using the appliance.

- This tumble dryer is intended for **NORMAL DOMESTIC USE ONLY**.
- The dryer must be installed by a Registered Installer.
- Any electrical work required to install the appliance should be carried out by a qualified person.
- The tumble dryer should be serviced by an appointed service organisation and only genuine parts used.
- It is recommended that the dryer be serviced annually by a person competent to service gas fired tumble dryers.

Under no circumstances should you attempt to repair the appliance yourself. Repairs carried out by inexperienced persons may cause serious injury. Consult your local appointed service engineer and insist on genuine spare parts.

- The special mains cable and plug assembly must only be replaced with a genuine part available from the manufacturer or service agent.
- Keep the packing materials from your machine away from children to avoid hazards.
- Keep pets away from your machine.
- Your machine is designed for use in a domestic environment. The warranty will be invalid if you use it for commercial purposes.

**DO NOT** - use a two-way adaptor, or extension lead. The dryer must be connected to its own socket.

**DO NOT** - block the air inlets at the front and back of your dryer.

**DO NOT** - exceed the recommended maximum load.

**DO NOT** - place articles in the dryer if anything other than a water solution has been used in the cleaning process.

**DO NOT** - dry unwashed items in the tumble dryer.

**DO NOT** - attempt to dry dripping wet articles.

**DO NOT** - use the tumble dryer if you suspect that it is damaged in any way.

## **SECTION 1: BEFORE USE**

### **\* User Information**

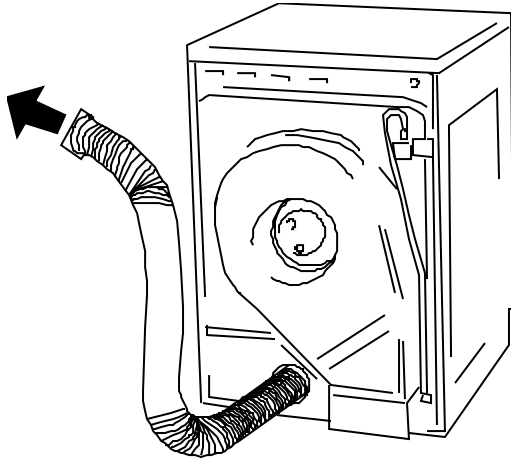
- **WARNING:** Never stop a tumble dryer before the end of a drying cycle unless all items are quickly removed and spread out so that heat is dissipated.
- Clean the lint filter after each drying cycle or the restrictions to airflow will extend drying times and could cause the limit thermostat to stop the burner firing for the remaining part of the drying cycle. This will require the appliance being restarted.
- Under no circumstances should anything other than the recommended articles be placed in the tumble dryer.
- It is dangerous to alter or modify the product in any way other than fitting authorised accessories.
- The rear of the dryer gets quite hot during use. Position the dryer so that the back is not accessible while in operation.
- **DO NOT** - allow fluff to accumulate around the tumble dryer. It is important to clean fluff from the window of the dryer and around the door seal after each drying cycle. Failure to do so could result in water leaking.
- This appliance is not intended for use by persons (including children) with reduced physical, sensory or mental capabilities, or lack of experience and knowledge, unless they have been given supervision or instruction concerning use of the appliance by a person responsible for their safety.
- Items that have been soiled with substances such as cooking oil, acetone, alcohol, petrol, kerosene, spot removers, turpentine, waxes and wax removers should be washed in hot water with an extra amount of detergent before being dried in the tumble dryer.
- Remove all objects from pockets such as lighters and matches.
- **DO NOT** – allow children to tamper with the controls and keep them away from the dryer when it is in operation.
- **DO NOT** – place articles in the dryer if anything other than a water solution has been used in the cleaning process.
- **DO NOT** – attempt to dry dripping wet articles or items containing foam rubber or rubber-like material.
- **DO NOT** - place items contaminated with inflammable substances in the dryer, such as petrol, cleaning solvents, cooking oil fat, or hair lacquer. This can cause fires. For the same reason, do not dry rubber, foam rubber, plastic or paper
- We suggest a fabric conditioner to be used to reduce static electricity.
- Fabric softeners, or similar products, should be used as specified by the Fabric Softener instructions.
- Items such as foam rubber (latex foam), shower caps, waterproof textiles, rubber backed articles and clothes or pillows fitted with foam rubber pads should not be dried in the tumble dryer.
- Do not tumble dry woollen or wool mixture articles unless the article is labelled to be. This should avoid shrinkage.
- Place delicate articles e.g. tights, scarves, inside a pillowcase.
- To avoid the need to iron easycare polyester/cotton items it is better to only dry small loads (i.e. half fill drum).
- It is better to dry small and large articles together.
- Do not overload the dryer or dry large bulky items such as duvets or sleeping bags as it is important that the airflow through the dryer is not obstructed.
- We recommend that the appliance is unplugged each time after use. It should always be disconnected from the electricity supply if it is to be left unattended for long periods (i.e. weekends, holidays etc).

## **SECTION 2: INSTALLATION**

### **\* Venting**

For a safe and reliable installation please refer to the installation and service booklet.

## **SECTION 2: INSTALLATION (Cont)**



### **Fixed Rear Venting.**

Venting through a hole at the bottom of the back panel. A vent hose must always be used to vent the warm damp exhaust air.

The best solution is to make a permanent connection through either a wall or a window. This is particularly recommended for small, cool rooms and a kit for this purpose is available as an accessory.

### **\*Venting**

When using the vent hose, remember the following points:

- The vent hose must be at least 10cm (4ins) in diameter.
- No more than three right-angled bends should be allowed when positioning the vent hose.
- Do not distort or constrict the vent hose as this will reduce the airflow.
- The vent hose must not be shared with other appliances, for example, a cooker hood outlet.
- When drying, the vent hose must always be extended through an open door or window.

### **\* Prior to Installation**

Check that the local distribution conditions, nature of gas, pressure and adjustment of the dryer are compatible.

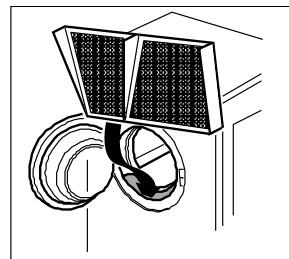
### **\* Positioning and Air Supply**

The dryer must not be placed in a bedroom, bathroom, shower room, or locations where concentrations of flammable vapours may accumulate, but may be positioned against walls, other appliances, kitchen furniture and similar surfaces. A venting hose must be used. For safe operation, the room in which the dryer is placed must have a good supply of fresh air. This must include an openable window or equivalent which must always be open during the drying cycle.

The appliance must not be installed behind a lockable door, a sliding door or a door with a hinge on the opposite side to that of the tumble dryer.

### **\* Final Installation**

Place the filter in its operating position as shown in the diagram. For cleaning the filter refer to Section 5: Drying your laundry.



If you wish to change the side on which your door opens, see **Section7 - Door Reversal**. Remove any dust by wiping the drum and door with a damp cloth. Any initial smell of burning will be caused by dust on the heater and will quickly disappear. Position the tumble dryer so that the plug remains accessible after installation.

### **SECTION 3: TECHNICAL SPECIFICATIONS**

Overall Dimensions:

Height: 85 cm      Width: 59.5 cm      Depth: 57 cm

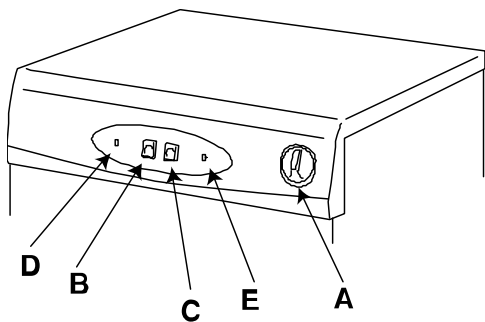
Maximum Dry Weight Loads:

Cotton 7kg, 'Easycare' polyester/cotton 7kg (for minimum creasing 3kg)      Delicates 3kg

For electrical and gas ratings see plate on back of dryer. For Model type see serial plate inside door. (Needed when requesting service). Room temperature range 5°C to 30°C. Your washing machine should have a spin speed of not less than 1000rpm.

### **SECTION 4: CONTROL PANEL**

(Style of control panel may vary)



\*A – Programme Selector – Select the required drying programme.

\*B - Heat Switch - Select the required heat setting based on the load in the drum

\*C – Start Button – Press to start the machine.

\*D - Heater Neon - When lit shows that gas is heating the machine (switches on & off during the drying cycle).

\*E – Anti-crease Neon – The neon will light at the end of the drying cycle. This indicates the clothes are dry and can be removed. If the load is not removed immediately the drum will periodically rotate to reduce creasing until the door is opened.

Program 1 – Extra dry: clothes are dry enough to be put away

Program 2 – Cupboard dry: clothes are dry enough to be put away

Program 3 – Mid dry: depending upon fabric, clothes are generally dry enough to be put away

Program 4 – Extra iron dry: clothes are almost dry but can be easily ironed

Program 5 – Iron dry: clothes are slightly damp and ready to be ironed

Program 6 – Damp dry: clothes are damp and ready to be ironed

Program 7 – 30 minute timed drying program

Program 8 – 30 minute timed 'airing' program; useful for freshening up clothing.





Programs 1-7 can be operated on either full heat or half heat setting and have a 12 minute cool-down period at the end of the cycle

Program 8 operates without the heater (regardless of the heat switch setting), circulating air through the dryer at the ambient temperature.

## **SECTION 5: DRYING YOUR LAUNDRY**

\* **Before Drying** - Check care labels inside the garments

### **CARE LABELS YOU MAY FIND ON YOUR FABRICS**

 Suitable for tumble drying
 Tumble dry using full heat
 Tumble dry using half heat
 Do not tumble dry

## **SECTION 5: DRYING YOUR LAUNDRY (CONT)**

### **\* Drying**

When starting the dryer for the first time, or starting after temporary disconnection from the gas supply, air in the pipes will prevent ignition. To clear this air, the dryer must be operated by selecting extra dry and pressing start. Allow the dryer to operate for 1/2 minute before stopping the dryer. Repeat this process until continuous burning of the gas is indicated by the neon light on the control panel. (The light will go out when in reverse tumble).

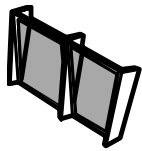
- Open a nearby window to allow for the circulation of fresh air, even if using a vent hose.
- Open the dryer door.
- If drying sheets, load before other items, starting with one corner.
- Load clothes loosely into the drum.
- Close the dryer door.
- Dry your hands.
- Plug in the machine.
- Select the programme and heat setting required, and press the start button.
  
- The drum will begin rotating in the reverse (anticlockwise) direction for 5 seconds. It will then rotate forwards and will continue to reverse every 6 minutes after that. The dryer does not heat while rotating in the reverse direction.
  
- There is an automatic 12 minute cool down period at the end of every cycle, during which the heater is switched off. This helps to minimize creasing, and must always be used fully to avoid the risk of fire.

### **NEVER SWITCH THE DRYER OFF AND LEAVE A HOT LOAD IN THE DRUM - RISK OF FIRE.**

- When drying large items such as sheets, we suggest you periodically stop the dryer to redistribute the load.
- To stop the machines during the middle of the programme simply open the door; the drum will stop rotating automatically. To start the machine - close the door and press the start button.

### **\* After removing the dried clothes**

**ALWAYS CLEAN THE FILTER.** Failure to clean the filter will extend drying times and could cause the safety cut-out to operate.



- Pull the filter upwards and away from the appliance
- Remove any threads or fluff by hand or with a soft brush.
- Slide the filter back.
- Wash the filter occasionally in detergent solution and with a soft brush to remove small particles.
- If your filter becomes damaged, replace it to ensure no damage is caused to the dryer.

## **SECTION 6: ADDITIONAL INFORMATION**

### **\* Any Problems?**

If the clothes are not dry after normal drying time:

- Check that you have selected an appropriate programme and heat setting
- Check that the lint filter has been cleaned. A blocked filter will restrict the airflow.
- Check that the venting system is clear, and the front air inlet is not blocked.
- Ensure the dryer is not overloaded. Restart the appliance with 'Extra Dry' selected and the heat switch on the high setting, press start button and observe the neon remains lit for more than one minute. If the neon goes out within the minute wait a further three minutes before stopping and restarting the appliance by opening and closing the door and pressing the start button. Observe the neon remains lit for more than one minute and the appliance continues to heat throughout the cycle (the window remains warm) and the clothes are dry at the end of the cycle.

If all these points are checked and the laundry is still not dry, call for a service engineer.

If your machine does not work check the following before calling a service engineer:

- Check that there is a supply of electricity.
- Check that the machine is switched on and the door properly closed.
- Check the fuse in the moulded plug.

### **\*Optional Extras**

Restraining Kit - To prevent damage to the gas connection should you move the dryer.

Vent Hose - Leads the warm damp air to an open door or window.

Wall/Window Vent Kit - To make a permanent connection through a wall or window.

Stacking Kit - To enable your dryer to be secured onto the top of a front loading washing machine (to save floor space).

The above items can be purchased as accessories for your tumble dryer from your supplier.

Instructions for stacking, if required, are supplied with the stacking kit.

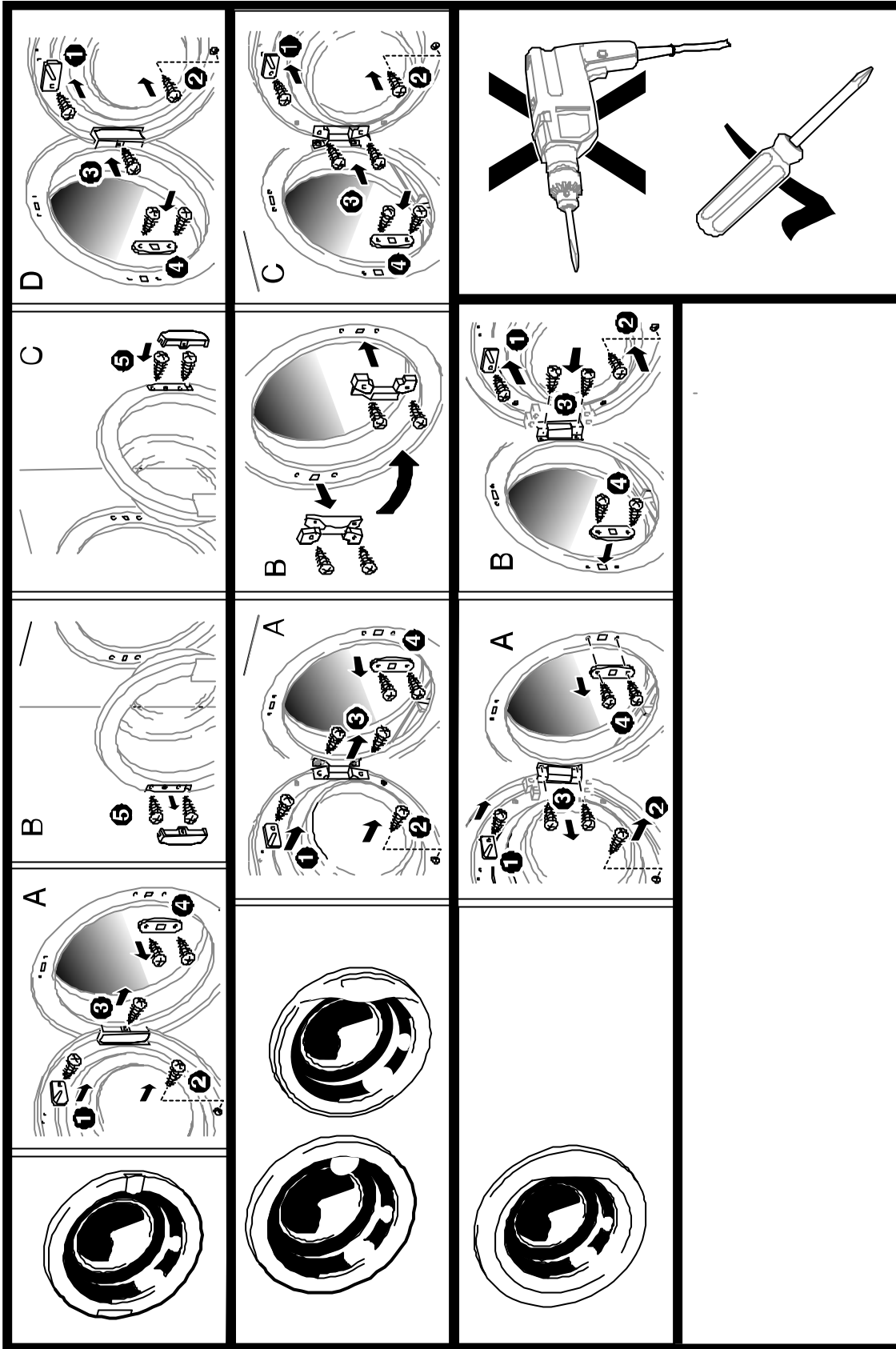
## **THIS APPLIANCE MUST BE EARTHED**

This label, positioned on the rear of your dryer, indicates the surface is hot when in operation - avoid touching.



**CAUTION  
HOT SURFACE**

# REVERSING THE DOOR OPENING



## SELECT DOOR TYPE

Manufactured by: Crosslee plc. Hipperholme, Halifax, West Yorkshire HX3 8DE